



Summit Way, SE19 | £899,950

020 8702 9333

[crystalpalace@pedderproperty.com](mailto:crystalpalace@pedderproperty.com)

**pedder**  
We live local



# In General

- Four bedroom mid-century townhouse
- No onward chain
- Backing onto Stambourne Woods
- Contemporary finishes
- Bi-fold doors to a 65 ft garden
- Second shower room
- Off street parking
- Highly popular location

# In Detail

Tucked quietly at the end of a peaceful cul-de-sac, this exceptional four bedroom mid-century townhouse unfolds across three carefully considered levels, a short walk from the lively cafés, restaurants and independent shops of the Crystal Palace Triangle.

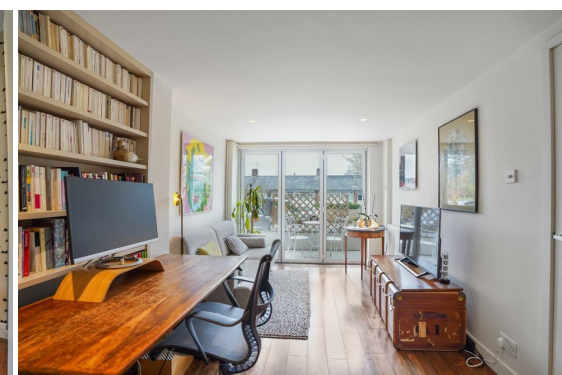
Recently reimagined with a meticulous attention to detail, the house balances architectural clarity with a warm and highly adaptable approach to modern living. Generous glazing, bespoke joinery and a restrained material palette combine to create interiors that feel both calm and quietly sophisticated.

The entrance level is anchored by a substantial bedroom of over 18 ft, lined with integrated storage and opened to the outside via full width bi-fold doors. A secluded front terrace extends the room outward and provides a peaceful setting for morning coffee or reading. A contemporary shower room completes this floor, lending flexibility for guest accommodation, independent living or a considered work from home arrangement.

At the centre of the house is a dramatic 33 ft open-plan living space arranged across the first floor. Natural light moves freely through the interior, while distinct zones for cooking, dining and relaxation remain elegantly connected. The kitchen is defined by sleek Corian surfaces, integrated appliances and a sociable breakfast bar. To the rear, bi-fold doors open directly onto a beautifully composed garden with raised decking, a lawned area and a prized westerly aspect that captures the afternoon and evening light. Beyond the garden lies the leafy backdrop of Stambourne Woods, creating an unexpectedly tranquil setting.

The upper level accommodates three further bedrooms, including a main room with far-reaching views across the surrounding area. A refined family bathroom and additional loft storage complete the plan.

Set within a notably friendly and community-minded enclave, this is a house that combines the enduring appeal of mid-century design with carefully crafted contemporary updates.



# Floorplan

## Summit Way, SE19

Total\* = 111.8 sq. m / 1203.0 sq. ft  
 Second Floor = 37.4 sq. m / 402.3 sq. ft  
 First Floor = 48.2 sq. m / 518.4 sq. ft  
 Ground Floor = 26.2 sq. m / 282.3 sq. ft  
 ☐ = Reduced head room below 1.5m



\*All measurements are approximate and do not include eaves space. The plans are for representation purposes only as defined by RICS - 'Code of Measurement Practice'. The plans are not to scale. Please personally check all sizes, dimensions, shapes and compass bearings before making any decisions reliant upon them. Copyright The Pedder Group © 2026.

Energy Efficiency Rating		Current	Potential
Very energy efficient - lower running costs			
102 plus) A			
81-101) B			
69-80) C		75	79
55-68) D			
39-54) E			
21-38) F			
1-20) G			
Not energy efficient - higher running costs			
England & Wales		EU Directive 2002/91/EC	

Pedder Property Ltd trading as Pedder for themselves and for the vendor/landlord of this property whose agents they are, give notice that (1) these particulars do not constitute any part of an offer or contract, (2) all statements contained within these particulars are made without responsibility on the part of Pedder or the vendor/landlord, (3) whilst made in good faith, none of the statements contained within these particulars are to be relied upon as a statement of representation or fact, (4) any intending purchaser/tenant must satisfy him/herself by inspection or otherwise as to the correctness of each of the statements contained within these particulars, (5) the vendor/landlord does not make or give either Pedder or any person in their employment any authority to make or give representation or warranty whatsoever in relation to this property.